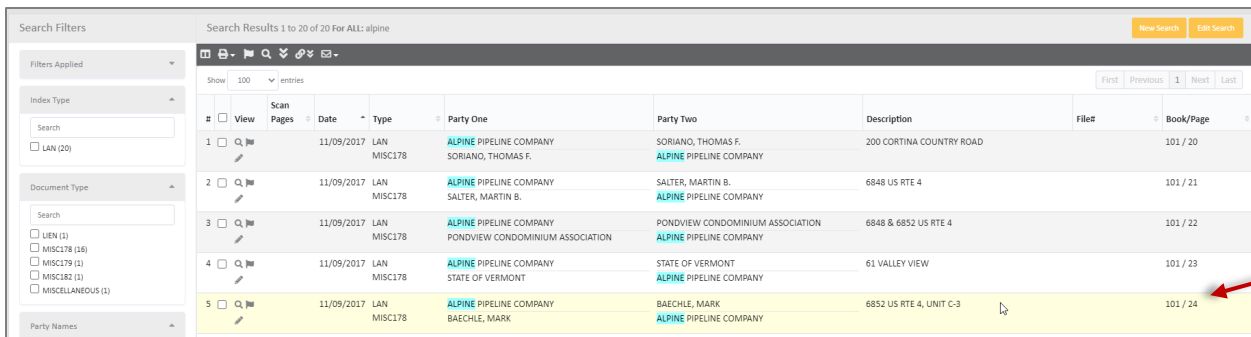


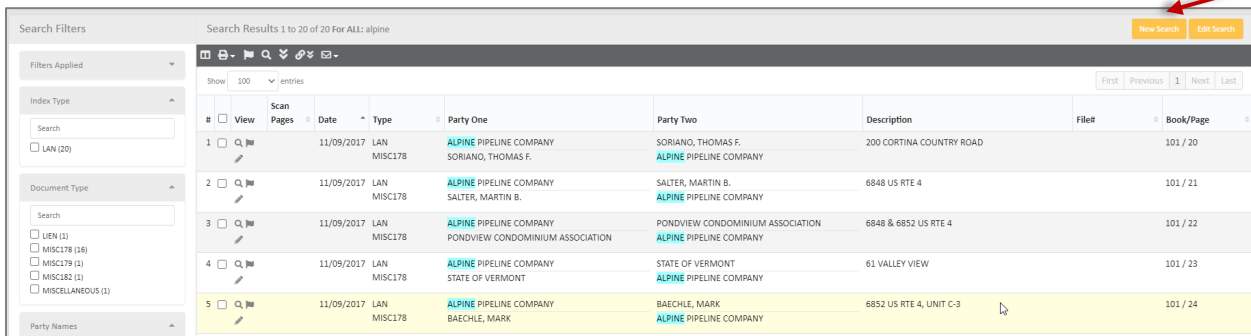
Record books for the last five years have been scanned and attached to one index entry per scanned book. This allows for viewing of the images associated with an electronic index record one book at a time. Each book is scanned under the book number and PAGE 1. Scrolling through the thumbnails will allow you to find the pages referenced in the electronic index.

1. Search for the document information.
2. Locate the document information for which you would like to see the image and note the book and page numbers.



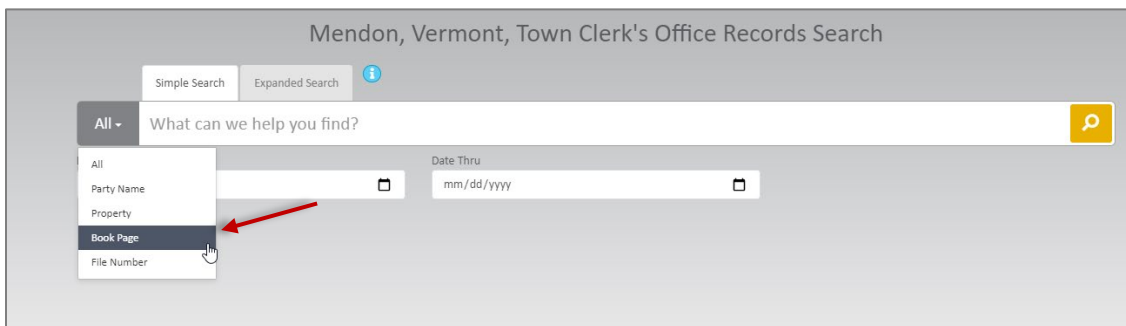
#	View	Scan Pages	Date	Type	Party One	Party Two	Description	File#	Book/Page
1			11/09/2017	LAN MISC178	ALPINE PIPELINE COMPANY SORIANO, THOMAS F.	SORIANO, THOMAS F. ALPINE PIPELINE COMPANY	200 CORTINA COUNTRY ROAD		101 / 20
2			11/09/2017	LAN MISC178	ALPINE PIPELINE COMPANY SALTER, MARTIN B.	SALTER, MARTIN B. ALPINE PIPELINE COMPANY	6848 US RTE 4		101 / 21
3			11/09/2017	LAN MISC178	ALPINE PIPELINE COMPANY PONDVIEW CONDOMINIUM ASSOCIATION	PONDVIEW CONDOMINIUM ASSOCIATION ALPINE PIPELINE COMPANY	6848 & 6852 US RTE 4		101 / 22
4			11/09/2017	LAN MISC178	ALPINE PIPELINE COMPANY STATE OF VERMONT	STATE OF VERMONT ALPINE PIPELINE COMPANY	61 VALLEY VIEW		101 / 23
5			11/09/2017	LAN MISC178	ALPINE PIPELINE COMPANY BAECHLE, MARK	BAECHLE, MARK ALPINE PIPELINE COMPANY	6852 US RTE 4, UNIT C-3		101 / 24

3. Return to the search menu by clicking the **NEW SEARCH** button.



#	View	Scan Pages	Date	Type	Party One	Party Two	Description	File#	Book/Page
1			11/09/2017	LAN MISC178	ALPINE PIPELINE COMPANY SORIANO, THOMAS F.	SORIANO, THOMAS F. ALPINE PIPELINE COMPANY	200 CORTINA COUNTRY ROAD		101 / 20
2			11/09/2017	LAN MISC178	ALPINE PIPELINE COMPANY SALTER, MARTIN B.	SALTER, MARTIN B. ALPINE PIPELINE COMPANY	6848 US RTE 4		101 / 21
3			11/09/2017	LAN MISC178	ALPINE PIPELINE COMPANY PONDVIEW CONDOMINIUM ASSOCIATION	PONDVIEW CONDOMINIUM ASSOCIATION ALPINE PIPELINE COMPANY	6848 & 6852 US RTE 4		101 / 22
4			11/09/2017	LAN MISC178	ALPINE PIPELINE COMPANY STATE OF VERMONT	STATE OF VERMONT ALPINE PIPELINE COMPANY	61 VALLEY VIEW		101 / 23
5			11/09/2017	LAN MISC178	ALPINE PIPELINE COMPANY BAECHLE, MARK	BAECHLE, MARK ALPINE PIPELINE COMPANY	6852 US RTE 4, UNIT C-3		101 / 24

4. Select **BOOK PAGE** from the options menu on the **SIMPLE SEARCH** tab.



Mendon, Vermont, Town Clerk's Office Records Search


Simple Search Expanded Search

All - What can we help you find?



All Party Name Property **Book Page** File Number

Date Thru mm/dd/yyyy

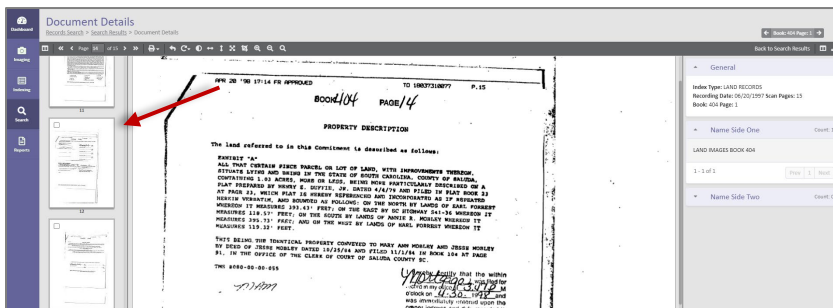
- Type the book number of the record you would like to display, and page number 1. Then, click the **SEARCH** icon.

- The following results will display. To choose the Images Book record, click on the **VIEW DOCUMENT DETAILS** icon .

Search Results 1 to 2 of 2 For Book: 101 Page: 1

#	View	Scan Pages	Date	Type	Party One	Party Two	Description	File#	Book/Page
1		985	11/07/2017	LAN	LAND RECORDS IMAGES BOOK 101				101 / 1
2			11/07/2017	LAN DEED	BARONE, MICHAEL T. AND JUDY G.	HYAMS, OLIVER J. AND CHARITY ALLISON	976 MEADOWLAKE DR		101 / 1

- Begin to scroll through the thumbnails to locate the record you want.



You can also jump to the page associated with the record by typing the page number and pressing the enter key.

